

# Mounting Instruction

Model: **BMW S1000R 2017**



Description: **BELLYPAN (one piece)**  
VEU.005.S117N.K

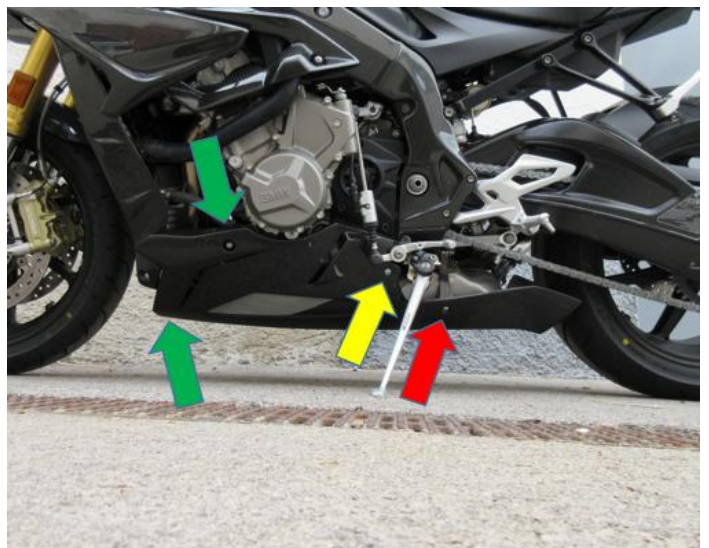
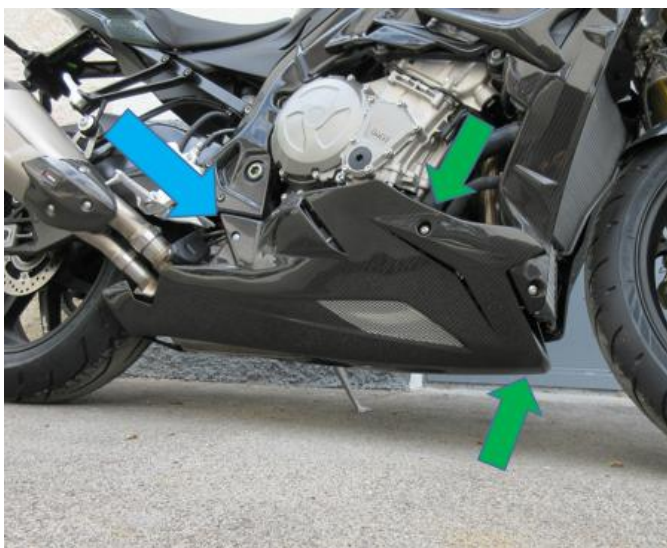
Thank you very much for your confidence in our products.

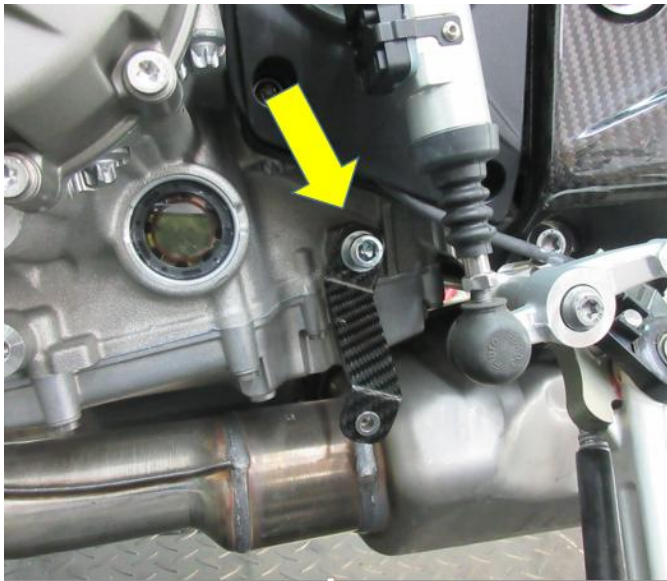
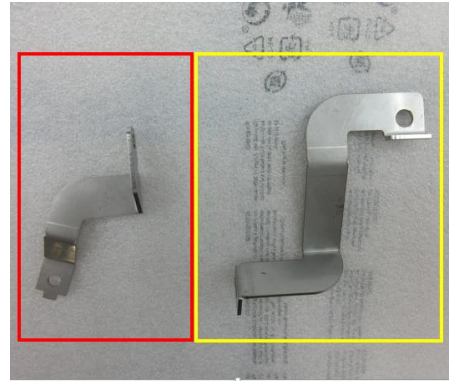
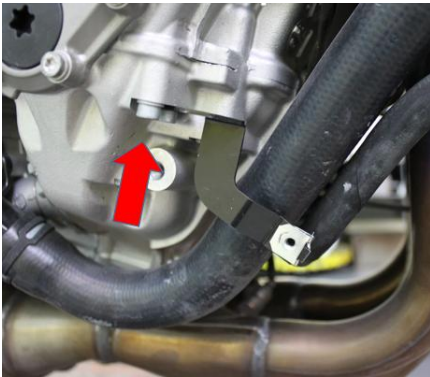
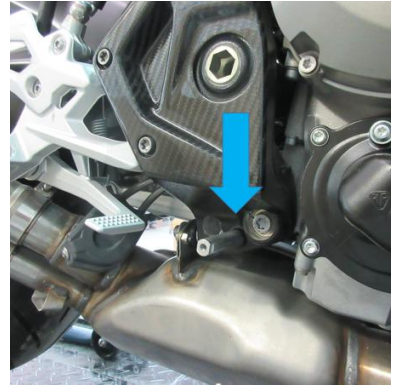
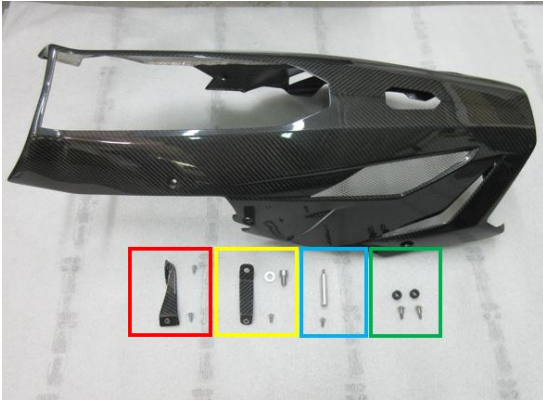
Prior to mounting, please check the compatibility of this component on the basis of the documents supplied with your vehicle type. The required number is visibly embedded on the inside of the carbon component

Mounting: Please ensure, you are on safe ground with the help of a mounting stand, or the main stand for the stability of your motorcycle.

## *Description:*

Please open the green marked torx screws on both sides and remove the original plastic bellypan ( Pic 1 & 2 ). Remove the green marked Rubber inserts from the OEM part and attach these inserts to the Ilmberger carbon one piece bellypan ( Pic 1, 2 & 3 ). In the next step mount the bellypan holders in front of the exhaust, yellow marked on the left side and red marked on the right side ( Pic 6, 7 & 8 ). Now take the blue and red marked holders and fix them on the frame ( Pic 3, 4 & 5 ) and in the next step take the yellow marked holder and fix this holder partial on the position ( Pic 3 & 9 ). In the next step take the bellypan and fix the green marked screws, with Rubber inserts, first. Then mount the blue marked screw on the frame ( Pic 1, 3 & 5 ). On the left side of the frame, place the yellow marked holder on the position of the screw-hole in the bellypan. Do not tighten the screw until you placed the bellypan in position ( Pic 9 & 10 ). Now you can also fix the yellow and red marked screws ( Pic 2 & 3 ) and check that all screws are attached properly and with the necessary torques required by BMW.





**Please look for enough free clearance to all surrounding, and moveable components. Please mount all screws, and watch for the correct fitment of the parts, before tightening the screws. Please pay attention to the original torques (tightnesses)**

**Enjoy your Ilmberger Carbon Component after successful installation!**

General Note: Our instructions have been checked to the best of our knowledge, but are without guarantee. If you have any problems with mounting, or have any questions, please contact us, or your trusted dealer or workshop.